

# READYLIFT®

## SUSPENSIONS

**Ram 1500 4" Lift 69-1040**

**IF your ReadyLIFT® product has a damaged or missing part, please contact customer service directly. For warranty issues please return to the place of installation and contact ReadyLIFT® .**

**A NEW REPLACEMENT PART WILL BE SENT TO YOU IMMEDIATELY**

**(800)549-4620**

**MON-FRI 7AM-5PM PST**

**OR**

**EMAIL: INFO@ReadyLIFT.COM**

**WEBSITE: ReadyLIFT.COM**

**\*\*Please retain this document in your vehicle at all times\*\***

### **Limited Lifetime Warranty**

This unique product warranty proves our commitment to the quality and reliability of every product that ReadyLIFT® manufactures. The ReadyLIFT® product warranty only extends to the original purchaser of any ReadyLIFT® product, if it breaks, we will give you a new part. Warranty does not apply to discontinued parts. Our Limited Lifetime Warranty excludes the following ReadyLIFT® items; bushings, bump stops, ball joints, tie rod ends, heim joints and shock absorbers. These parts are subject to wear and are not considered defective when worn. They are warranted for 12 months from the date of purchase for defects in workmanship. **This product warranty is voided if the vehicle is not aligned after kit installation and proper maintenance is routinely done.**

Product purchased directly from ReadyLIFT® has a 30 day return policy on uninstalled products from the date of purchase. Uninstalled product returns must be in the original ReadyLIFT® packaging. Please call **800-549-4620** to get an RGA# for any return. Customer is responsible for shipping costs back to ReadyLIFT®. **Returns without RGA# will be refused.** Contact ReadyLIFT® directly about any potentially defective parts prior to removal from vehicle. If the part in question is deemed warrantable an RGA# will be assigned and can be returned for repair or replacement. Replacement parts required prior to warranty claim completion must be purchased. Upon receipt and verification of deemed warranty parts claim, a credit or refund can then be processed to complete warranty claim transaction.

ReadyLIFT® products are **NOT** intended for off-road abuse. Any damage or failure as a result from off-road abuse voids the warranty of the ReadyLIFT® product. ReadyLIFT® is **NOT** responsible for any subsequent damages to any related vehicle parts due to misuse, abuse, improper installation, or lack of maintenance. Furthermore, ReadyLIFT® reserves the right to change, modify or cancel this warranty without prior notice.

# READYLIFT® SUSPENSIONS

## Ram 1500 4" Lift 69-1040

Please read Instructions thoroughly and completely before beginning installation.  
Installation by a certified professional mechanic is highly recommended.

ReadyLIFT® Suspension is **NOT** responsible for any damage or failure resulting from improper installation.

**Safety Warning:** Suspension systems or components that enhance the on and off-road performance of your vehicle may cause it to handle differently than it did from the factory. Extreme care must be used to prevent loss of control or vehicle rollover during abrupt maneuvers. Always operate your vehicle at reduced speeds to ensure your ability to control your vehicle under all driving conditions. Failure to drive safely may result in serious injury or death to driver and passengers. Driver and passengers must ALWAYS wear your seat belts, avoid quick sharp turns and other sudden maneuvers. ReadyLIFT® Suspension does not recommend the combined use of suspension lifts, body lifts, or other lifting devices. You should never operate your vehicle under the influence of alcohol or drugs. Constant maintenance is required to keep your vehicle safe. Thoroughly inspect your vehicle before and after every off-road use. It is the responsibility of the retailer and/or the installer to review all state and local laws, with the end user of this product, related to bumper height laws and the lifting of their vehicle before the purchase and installation of any ReadyLIFT® products. It is the responsibility of the driver/s to check their surrounding area for obstructions, people, and animals before moving the vehicle. All raised vehicles have increased blind spots and damage, injury and/or death can occur if these instructions are not followed.

**Installation Warning:** All steps and procedures described in these instructions were performed while the vehicle was properly supported on a two post vehicle lift with safety jacks. Use caution during all disassembly and assembly steps to insure suspension components are not over extended causing damage to any vehicle components and parts included in this kit.

This suspension system was developed using a 35" x 12.5" tire with 20" x 9" wheel and a offset of 0. If wider tires are used, offset wheels may be necessary and trimming may be required. Factory wheels can be used but are not recommended with tires over 11" wide. The stock spare rim can be run in an emergency. Please note that if running the spare factory tire, it is done for short distances and a speed not to exceed 45mph or damage to differentials may occur.

### VEHICLE HEIGHT MEASUREMENTS

|       | Driver Before | Driver After | Pass. Before | Pass. After |
|-------|---------------|--------------|--------------|-------------|
| Front |               |              |              |             |
| Rear  |               |              |              |             |

# READYLIFT® SUSPENSIONS

## Ram 1500 4" Lift 69-1040

### BILL OF MATERIALS

|                               |   |
|-------------------------------|---|
| FRONT STRUT EXTENSION         | 2 |
| PRE-LOAD SPACER               | 2 |
| FRONT SWAY BAR BRACKET        | 2 |
| REAR SPRING SPACER            | 2 |
| REAR SWAY BAR BRACKET         | 2 |
| REAR BUMP STOP EXTENSIONS     | 2 |
| UPPER CONTROL ARM (DRIVER)    | 1 |
| UPPER CONTROL ARM (PASSENGER) | 1 |
| BALL JOINT NUT SPACER         | 2 |
| 3/8" BOLT                     | 2 |
| 3/8" SERRATED FLANGE NUT      | 2 |
| M10-1.25 SERRATED FLANGE NUT  | 6 |
| M10 FLAT WASHER               | 2 |
| M12 X 20MM BOLT               | 4 |
| M12 X 35MM BOLT               | 2 |
| M12 LOCK NUT                  | 4 |
| M12 WASHER                    | 8 |

**\*\*\*Parts shown in red are for picture clarification only, actual lift components, and colors may vary.\*\*\***

### Safety Warning

#### Before you start installation:

ReadyLIFT® Suspension highly recommends that the installation of this product be performed by a professional mechanic with experience working on and installing suspension products. Professional knowledge and skill will typically yield the best installation results. If you need an installer in your area, please contact ReadyLIFT® Suspension customer service to find one of our "Pro-Grade" Dealers.

#### INSTALLATION BY A PROFESSIONAL IS HIGHLY RECOMMENDED.

- A Factory Service Manual for your specific Year / Make / Model is highly recommended for reference during installation.
- All lifted vehicles may require additional driveline modifications and / or balancing.
- A four wheel vehicle alignment will need to be performed after installation of this product.
- Speedometer / Computer recalibration is required if changing +/- 10% from factory tire diameter.
- Use of a Vehicle Hoist will greatly reduce installation time.
- Vehicle must be in excellent operating condition. Repair or replace any and all worn or damaged components prior to installation.

# READYLIFT® SUSPENSIONS

## Ram 1500 4" Lift 69-1040

Park vehicle on a clean flat surface and block the rear wheels for safety. Engage the parking brake.

Disconnect the vehicle power source at the ground terminal on the battery. Raise the front of the vehicle and support with jack stands at each frame rail behind the lower control arms.

Remove the front wheels and support the lower control arm with a suitable jack.

Remove the outer tie rod from the knuckle. Strike the tie rod boss on the knuckle with a dead blow hammer to dislodge the taper. (FIG 1)

Remove the sway bar from the frame. Let hang out of the way. (FIG 2)

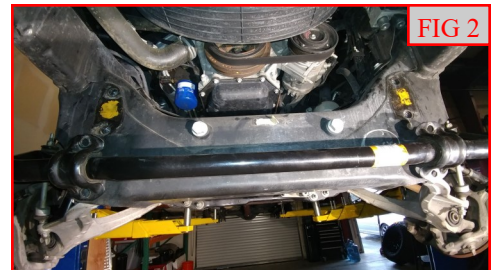
Remove the brake caliper from the knuckle. Using a suitable device, hang the caliper out of the way. DO NOT let the caliper hang by the brake line. (FIG 3)

Remove the brake rotor and set aside.

Remove the axle nut. (FIG 4)

Remove the upper ball joint from the knuckle. Strike the ball joint boss with a dead blow hammer to dislodge the taper. (FIG 5)

Remove the upper control arm from the frame. (FIG 6)



# READYLIFT® SUSPENSIONS

## Ram 1500 4" Lift 69-1040

Support the lower control arm with a suitable jack. Remove the lower strut from the lower control arm. (FIG 7)



Loosen the lower control arm at the frame and lower the control arm until the strut clears. The axle will need to be released from the hub bearing to allow enough travel to install the completed strut assembly.

Remove the strut from the frame.



**CAUTION: TAKE SPECIAL CARE WHEN DISASSEMBLING AND ASSEMBLING THE STRUT ASSEMBLIES. DAMAGE TO THE STRUT CAN OCCUR IF DONE INCORRECTLY. THE SPRING IS UNDER EXTREME PRESSURE AND CAN CAUSE BODILY INJURY AND/OR DEATH IF HANDLED IMPROPERLY.**

Mark the orientation of the strut assembly, spring to strut, and spring to top hat. These will be needed to be assembled in the same orientation as factory. Using a spring compressor, relieve spring pressure from the strut top hat. Remove the factory top hat. Remove the plastic spring lock from the top hat. (FIG 8)

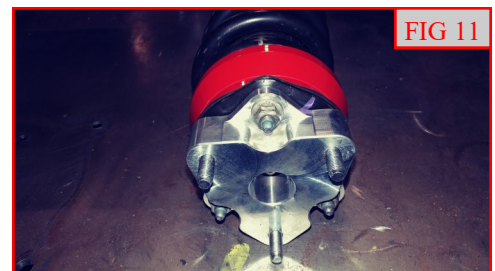


Install the ReadyLIFT® pre-load spacer in between the top hat rubber isolator/dust sleeve and the plastic spring lock. Install the factory top hat onto the strut. See Fig 9 for order:

1. Factory top hat and rubber isolator, 2. Factory dust shield, 3. ReadyLIFT® pre-load spacer, 4. Factory plastic spring lock. Torque to 30-ftlbs. (FIG 9, 10)



Install the ReadyLIFT® strut extension to the strut assembly using factory hardware. Torque to 25 ft-lbs. (FIG 11)



Mark the area on the lower control arm right above the strut mount. (FIG 12)



# READYLIFT® SUSPENSIONS

## Ram 1500 4" Lift 69-1040

Using a suitable tool, grind down this area for clearance when the strut is installed. (FIG 13)



Mark the bottom of the strut body as shown. This needs to be done to the inside edge of the strut. Note: the strut mounts 180 degrees from the original orientation, so this mark will be on the original outside face which will then be the inside face once installed into the vehicle. (FIG 14)



Using a suitable tool, grind down this area at a 45 degree angle for clearance when the strut is installed. Do not grind into the strut body, only on the lower mount. Paint the exposed metal with a quality rust preventative paint. (FIG 15)

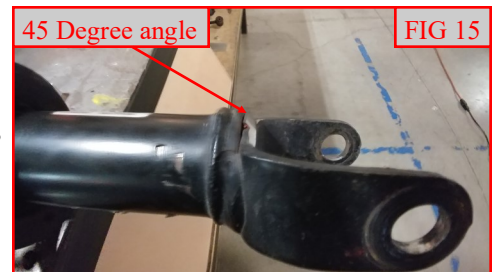


Fig 16 shows the reason behind the above clearance steps. This is for full droop clearance and easier install of the lower strut mount. (FIG 16)

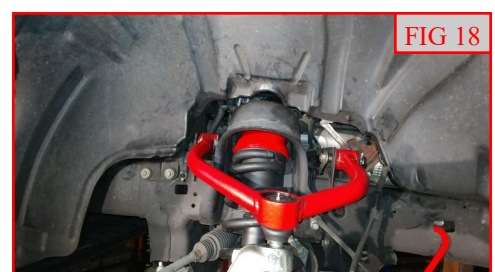


Install the completed strut assembly into the frame using **M10 flange nuts**. Raise the lower control arm up and install the lower strut mount using **factory hardware**. Do not tighten at this time. (FIG 17)

Install the bushings and crush sleeves into the ReadyLIFT® control arms using the provided one time grease pack. Lightly grease the bushings and sleeves and slide into the pivot points on the control arms.



Install the appropriate side ReadyLIFT® upper control arm to the frame side that you are working on using **factory hardware**. (The control arms are identified by the ABS mounting hole, the hole will line up just like the factory arm towards the rear of the vehicle) Do not tighten at this time. (FIG 18)



# READYLIFT<sup>®</sup>

## SUSPENSIONS

### Ram 1500 4" Lift 69-1040

Install the upper ball joint to the knuckle using **provided hardware**. Make sure to install the **ball joint spacer** under the nut. Torque to **45 ft-lbs**. Install the provided cotter pin. (FIG 19)



Install the rotor and caliper using factory hardware. Torque to **130 ft-lbs**. Install the outer tie rod end to the knuckle using factory hardware. Torque to **65 ft-lbs**. Install the axle nut. Torque to **185 ft-lbs**. (FIG 20)



Install the ReadyLIFT sway bar drops to the frame using **factory hardware**. Torque to **45 ft-lbs**. Install the sway bar to the ReadyLIFT drop brackets using **M12 x 20mm bolts and washers**. Torque to **45 ft-lbs**.



Install the front wheels and lower the vehicle to the ground. Jounce the suspension a few times to get it to settle to the new ride height. Torque the lug nuts to the wheel manufacturer specs, upper strut mount to **30 ft-lbs**, upper control arms, lower control arms, and lower strut mount to **120 ft-lbs**. Lower control arm to have final torque set by alignment shop. Use an appropriate tool, grease the upper ball joint just until the boot just starts to expand. Do not over grease.



Block the front wheels and jack the rear up. Place jack stands at the frame rails in front of the lower control arms. Removal of the wheels and inner liner is not necessary, but recommended for ease of install.



Support the axle with a suitable jack. Remove the lower shock from the axle. (FIG 22)

Remove the ABS, brake line bracket and sway bar end link at the frame. (FIG 23, 24)



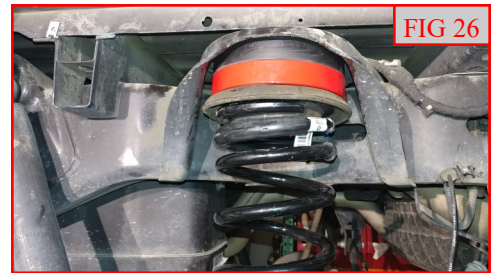
# READYLIFT® SUSPENSIONS

## Ram 1500 4" Lift 69-1040

Loosen but do not remove the upper control arms, lower control arms, and track bar hardware at the frame and axle. (FIG 25)



Lower the axle enough to remove the springs. Install the ReadyLIFT® rear spring spacers onto the springs making sure to keep the factory isolator on top of the spring. Raise the axle while locating the spring assembly to the frame. (FIG 26)



Install the ReadyLIFT bump stop to the axle using M10 X 60MM bolts, washers, and nuts. Torque to 35 ft-lbs. (FIG 27)



Install the lower shock to the axle using factory hardware. Do not tighten at this time.

Install the ReadyLIFT® rear sway bar bracket to the frame using M12 x 35mm bolts, washers, and nuts. (Part shown on outside of frame for reference, install to the inside of the frame.) Torque to 45 ft-lbs. (FIG 28)



Install the sway bar end links to the ReadyLIFT® drop brackets using factory hardware. Do not tighten at this time. (FIG 29)

Install the brake line brackets to the frame using factory hardware. Torque to 5 ft-lbs.



If removed, install the inner fender liner and wheels. Lower the vehicle to the ground. Jounce the vehicle a few times to get it to settle to the new ride height. Torque the lug nuts to the wheel manufacturer specs, the upper, lower control arms to 200 ft-lbs, track bar hardware to 125 ft-lbs, lower shock hardware to 65 ft-lbs, and sway bar link to 45 ft-lbs. Install the vehicles power source at the negative terminal. Cycle the steering wheel and make sure that there is clearance between all moving components and brake/ABS lines. Adjust as necessary. Have the alignment set to the recommended specs at the back of the instruction manual.



# **READYLIFT**<sup>®</sup>

## **SUSPENSIONS**

### **Ram 1500 4" Lift 69-1040**

**\*\*\*FAILURE TO PERFORM THE POST INSPECTION CHECKS MAY RESULT IN VEHICLE COMPONENT DAMAGE AND/OR PERSONAL INJURY OR DEATH TO THE DRIVER AND/OR OTHERS\*\*\***

### **Final Checks & Adjustments**

Once the vehicle is lowered to the ground, check all parts which have rubber or urethane components to ensure proper torque. Torque lug nuts to the wheel manufacturer specs. Move vehicle backwards and forwards a short distance to allow suspension components to adjust. Turn the front wheels completely left then right and verify adequate tire, wheel, brake line, and ABS wire clearance. Test and inspect steering, brake and suspension components for tightness and proper operation. Inspect brakes hoses and ABS lines for adequate slack at full extension, adjust as necessary.

**\*\*\*RECHECK ALL HARDWARE FOR PROPER TORQUE VALUES AFTER 500 MILES, AND THEN PERIODICALLY AT EACH SERVICE INTERVAL THEREAFTER.\*\*\***

### **Vehicle Handling Warning:**

Vehicles with larger tires and wheels will handle differently than stock vehicles. Take time to familiarize yourself with the handling of your vehicle.

### **Wheel Alignment/Headlamp Adjustment:**

It is necessary to have a proper and professional wheel alignment performed by a certified alignment technician. Align the vehicle to recommended specifications. It is recommended that your vehicle alignment be checked after any off-road driving. In addition to your vehicle alignment, for your safety and others, it is necessary to check and adjust your vehicle headlamps for proper aim and alignment.

### **RECOMMENDED ALIGNMENT SPECS**

|        | Driver | Passenger | Tolerance | Total / Split |
|--------|--------|-----------|-----------|---------------|
| Camber | +0.0   | +0.0      | +/- 0.5   | +0.0          |
| Caster | +3.0   | +3.0      | +/- 0.5   | +0.0          |
| Toe    | +.05   | +.05      | +/-0.05   | +.20          |